

FITTINGS

Bend 90° Top Lid

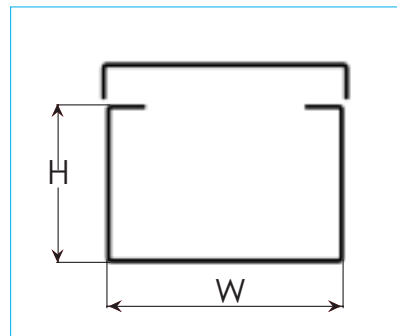
Thickness: 1 mm - 1.2 mm - 1.5 mm

TL90 7410

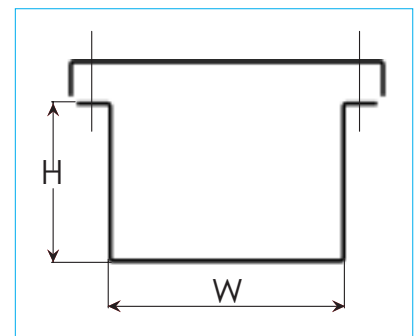
Reference			Dimensions	
1 mm	1.2 mm	1.5 mm	mm	inch
TL90 7410 050 0050 2	TL90 7410 050 0050 3	TL90 7410 050 0050 4	50 x 50 mm	(2"x2")
TL90 7410 075 0050 2	TL90 7410 075 0050 3	TL90 7410 075 0050 4	75 x 50 mm	(3"x2")
TL90 7410 075 0075 2	TL90 7410 075 0075 3	TL90 7410 075 0075 4	75 x 75 mm	(3"x3")
TL90 7410 100 0050 2	TL90 7410 100 0050 3	TL90 7410 100 0050 4	100 x 50 mm	(4"x2")
TL90 7410 100 0075 2	TL90 7410 100 0075 3	TL90 7410 100 0075 4	100 x 75 mm	(4"x3")
TL90 7410 100 0100 2	TL90 7410 100 0100 3	TL90 7410 100 0100 4	100 x 100 mm	(4"x4")
TL90 7410 150 0050 2	TL90 7410 150 0050 3	TL90 7410 150 0050 4	150 x 50 mm	(6"x2")
TL90 7410 150 0075 2	TL90 7410 150 0075 3	TL90 7410 150 0075 4	150 x 75 mm	(6"x3")
TL90 7410 150 0100 2	TL90 7410 150 0100 3	TL90 7410 150 0100 4	150 x 100 mm	(6"x4")
TL90 7410 150 0150 2	TL90 7410 150 0150 3	TL90 7410 150 0150 4	150 x 150 mm	(6"x6")
TL90 7410 200 0100 2	TL90 7410 200 0100 3	TL90 7410 200 0100 4	200 x 100 mm	(8"x4")
TL90 7410 300 0100 2	TL90 7410 300 0100 3	TL90 7410 300 0100 4	300 x 100 mm	(12"x4")
TL90 7410 450 0100 2	TL90 7410 450 0100 3	TL90 7410 450 0100 4	450 x 100 mm	(18"x4")
TL90 7410 600 0100 2	TL90 7410 600 0100 3	TL90 7410 600 0100 4	600 x 100 mm	(24"x4")

- Other dimensions are available upon request.

Type 1: inside



Type 2: outside



TL90 7410 C

Cornered

